

Standardized capillary blood sampling – GK-20

1

- 1) transport box ①
- 2) disinfectant ②
- 3) sterile disposable safety lancet with blade ③ (BD Microtainer, blue)
 - a) protective cap ③a
- 4) barcode ④
- 5) micro sample vial with isopropanol ⑤
- 6) glass capillary (20 µl), EDTA coated ⑥
- 7) glass capillary holder ⑦



2

Capillary blood is potentially infectious. **Wear gloves!**

Disinfect the patient's fingers/ earlobes. Give sufficient time and allow skin to air dry.



3

Choose the puncture site of the lancet carefully. Ideally, this is located slightly to the side of the fingertip or on the earlobe.

Pinch the tip of your finger between your thumb and forefinger and press towards your fingertip to ensure good blade penetration.



4

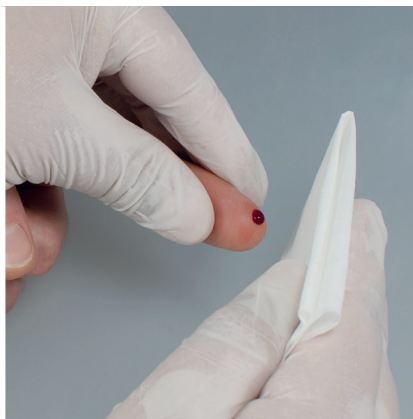
Remove the protective cap **3a** from the lancet **3** by twisting and pulling it off.

Press the lancet against the puncture site until the mechanism activates.



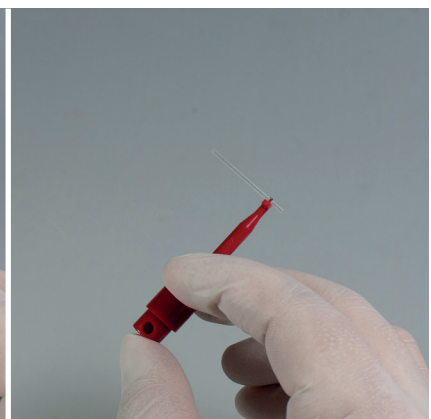
5

Wipe off and discard the first drop of blood.



6

Shake the glass capillary container **6** carefully and remove the protruding glass capillary with the holder.



7

Hold the glass capillary ⑥ in a horizontal or slightly tilted position and pick up the blood drop by capillary force.



8

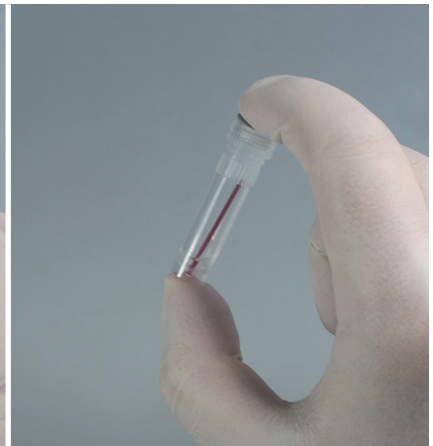
When the glass capillary ⑥ is completely filled with blood and there are no air bubbles, the sampling is finished.



9

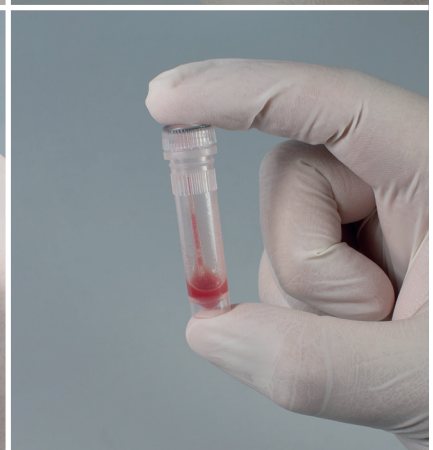
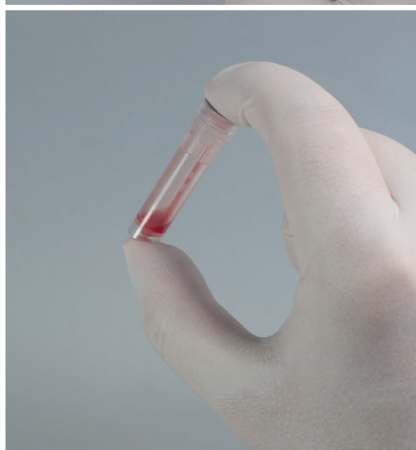
Transfer the glass capillary into the micro sample vial containing isopropanol.

One capillary per micro sample vial!



Close micro sample vial carefully and then shake vigorously so that the blood from the glass capillary can mix quickly and completely with the isopropanol.

Leave the glass capillary in the micro sample vial!



10

Stick the barcode (ID number) on the micro sample vial and transfer to the transport box.



11

As soon as bleeding has stopped, stick a plaster over the puncture site.



All listed and required materials can be requested via our order form.



MVZ Medizinische Labore
Dessau Kassel GmbH

Bestellkarte
Drogen- und Medikamentenanalytik

Ihr Ansprechpartner:
Dr. rer. medic. Michael Böttcher
Tel. 0340 54053-72
toxicology@laborpraxis-dessau.de
michael.boettcher@laborpraxis-dessau.de

MVZ Medizinische Labore Dessau Kassel GmbH
Bauhüttenstr. 6 | 06847 Dessau-Roßlau | www.laborpraxis-dessau.de



Drogen- u. Medikamentenanalytik	Hinweis	Maße	Bestellmenge
Urinbecher	weißer Deckel	100 ml	
Urinmonovetten	gelb	10 ml	
Urinmonovetten mit Stabilisator	grün	10 ml	
Kapillarblutentnahmesystem „GK20“; Glaskapillare			
<input type="checkbox"/> „GK20“/20	20 Stück		
<input type="checkbox"/> „GK20“/50	50 Stück		
Glaskapillare	EDTA beschichtet, 100 Stück pro Dose	20 µl	
Stechhilfen	blaues Griffstück	2 mm	
Speichelentnahmeset „Quantisal“			
Protokollbogen Toxikologisches Gutachten			
Anforderungsschein	Anforderungsschein-Nr.:		
Drogen- u. Medikamentenanalytik, KH			
Anforderungsschein	Anforderungsschein-Nr.:		
Medikamentenanalytik, KH			
Anforderungsschein	Anforderungsschein-Nr.:		
(Ü-Schein mit Anhang)			
Doppelkammerbeutel	klar		
Postversandbox	Karton		
Barcodebox			
Laborjournal			

BF-0M_001 Stand 06/2023